



An aerial photograph of a vast, mountainous landscape. The terrain is covered in dense green vegetation, likely forests and grasslands. A prominent river winds its way through the center of the valley, creating a series of meanders. The mountains in the background are layered, with some peaks appearing hazy due to atmospheric perspective. The sky is a clear, pale blue.

CarbonCrop

Restoring Forests, Simplifying Carbon.

An aerial photograph of a vast, mountainous landscape. The terrain is characterized by rolling green hills and deep, dark valleys. A winding river or stream flows through the center of the image, creating a series of loops and curves. The lighting suggests a bright, sunny day, with shadows cast across the hillsides. The overall scene conveys a sense of natural beauty and agricultural potential.

Opportunities for farmers



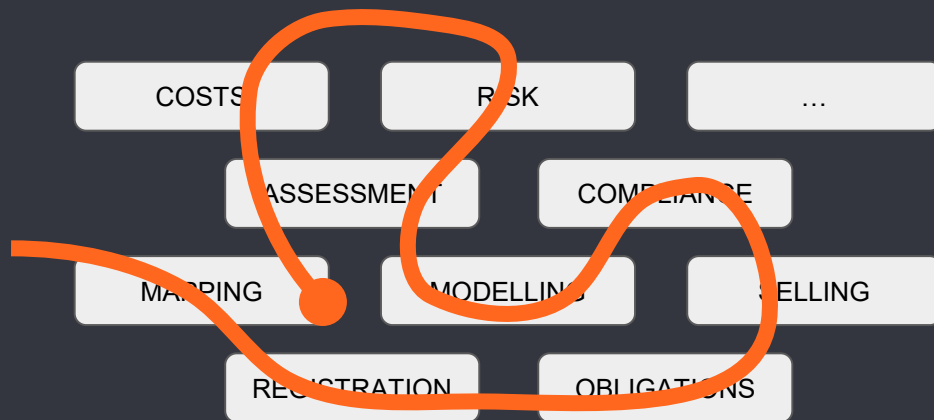
What is CarbonCrop?

Restoring Forests,
Simplifying Carbon.

A forest restoration platform to
scale climate resilience and
carbon removals.

Use AI to help landholders pull
1 billion tonnes of CO₂
out of the atmosphere
and lock it up into trees.





Market





Forestry
Consultants

Project Developers

CONTINUITY

REGISTRY

PLANNING

ENGAGEMENT

DATA MGMT

MORE
COMPLIANCE

COMPLIANCE

COSTS

MODELS

MODELLING

ASSESSMENT

SELLING

REGISTRATION

ASSESSMENT

ASSESSMENT

PORTFOLIO

BOOKKEEPING

RULES
CHANGES

Primary Sector
Processors

Afforestation
supply/logistics

Compliance
Market

Voluntary Market

Net Zero
Products

email

phone

hand maintained
models

spreadsheets

non-compliant
processes

Intermingled
customer data





**Forestry
Consultants**

Project Developers

CarbonCrop

**Carbon
Market**

**Primary Sector
Processors**

**Afforestation
supply/logistics**



How it works

Local and remote sensing data.

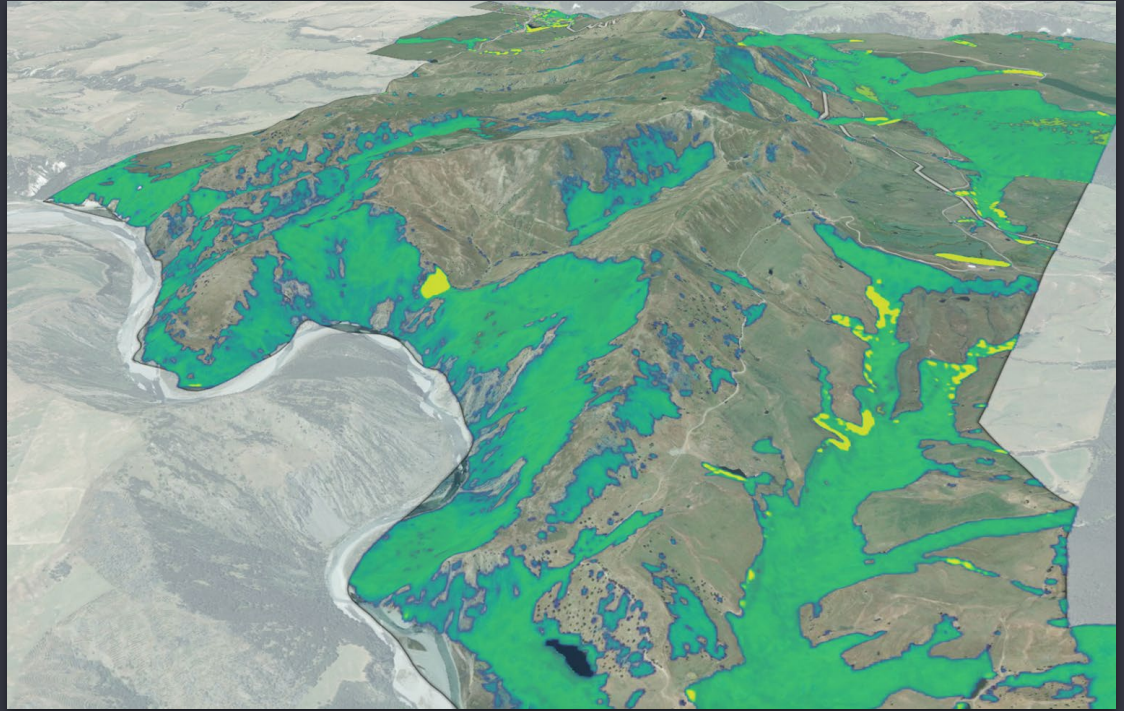
AI /machine learning models.

Geospatial processing and rules engines.

Project and workflow automation.

Environmental data.

Current and historic aerial and satellite imagery.



**Keep carbon simple,
not stupid.**



Why is PPCC interested?

Understand the catchments.

Identify existing opportunities.

Identify future opportunities.

Engaging farmers.

Maximise the impact of our funding.

Create and diversify carbon revenue.



Why is PPCC interested?

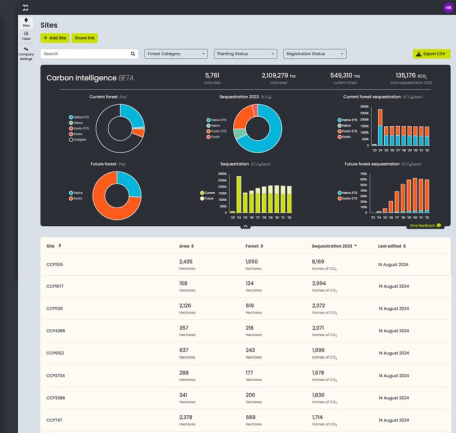
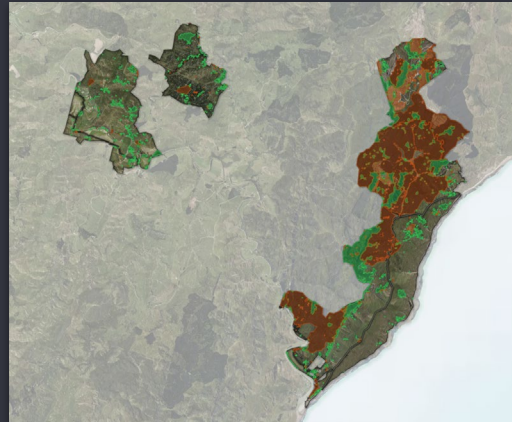
Map, measure and visualise your catchment all in one place.

Identify forested areas for protection.

Identify high-risk erosion areas for future planting.

Give farmers options to access the ETS.

Create sustainable revenue streams.



An aerial photograph of a vast, rugged landscape. The terrain is characterized by rolling hills and deep valleys, with a mix of green vegetation and brown, rocky soil. A winding river or stream flows through the center of the landscape, surrounded by lush green fields. The perspective is from a high altitude, looking down on the terrain. The sky is a pale, hazy blue.

What are some of these opportunities?

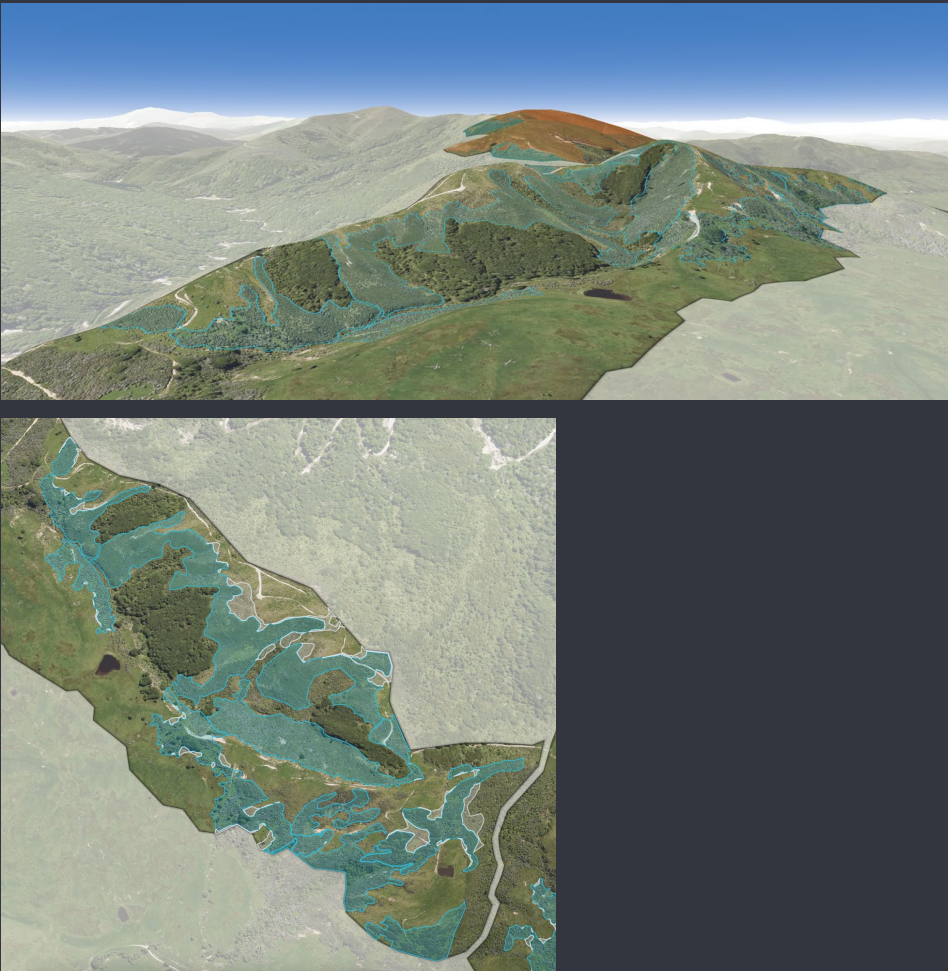
Natives in the ETS

What existing native forest on my farm could be eligible for the ETS?

Carbon Summary

Based on our analysis of aerial imagery and evidence you have provided, the areas of your land that may sequester carbon have been categorized as:

ETS ELIGIBLE NATIVE FOREST	40 hectares	265 tonnes per year	\$22,000 per year to 2050
ETS ELIGIBLE EXOTIC FOREST	57 hectares	1,676 tonnes per year	\$150,000 per year to 2050
CARBONCROP UNITS	141 hectares	307 tonnes per year	\$20,000 per year to 2050
INELIGIBLE/EXCLUDED	11 hectares	-	-



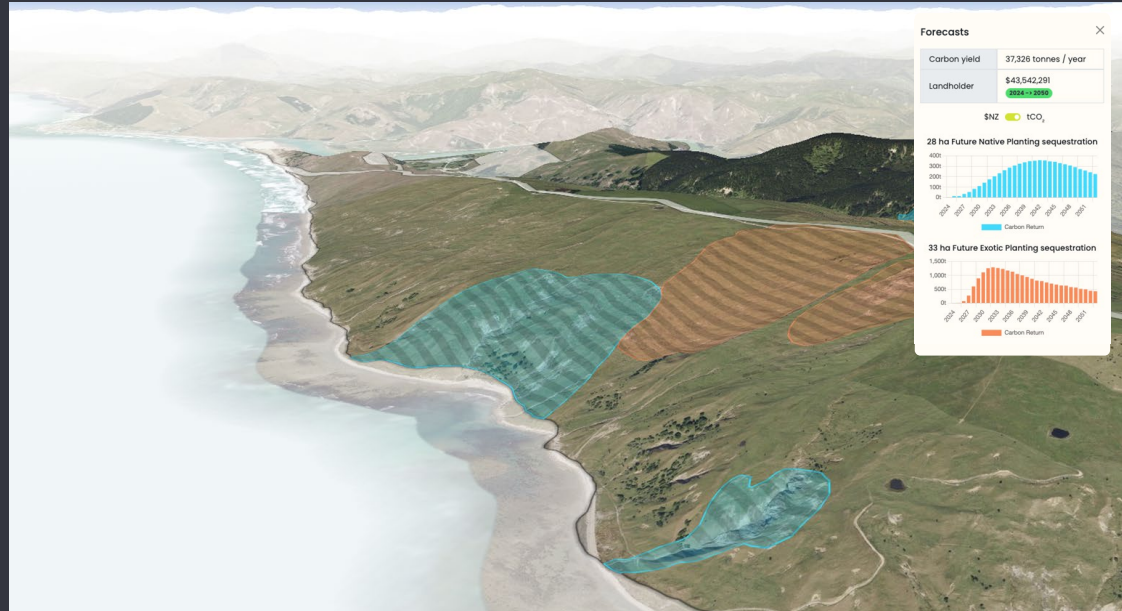
Native planting

I'd like to plant some natives.

The catchment group has some support for planting to improve water quality.

What areas of the farm might be good spots for this?


How much could I earn?





Supported DIY ETS


“I’m not stupid. I reckon I could register myself in the ETS with the right tools and the right support.”


Start something new


**Assess ETS eligibility**
Identify qualifying forest and forecast ETS returns

**Create an ETS account**
Open accounts with NZ-ETR and MPI before registering land in the ETS

**Register land in the ETS**
Confirm areas, collate evidence and submit an ETS application

**Transfer NZUs**
Request the transfer of NZUs from a holding account

**Transfer ETS participation**
Notify MPI of a change in ownership

**Remove land from the ETS**
Apply to MPI to remove an area of ETS-registered forest

Cancel



When can I start?

Express your interest in being one of the first to try this out.

Let Lynda know if you're keen.

Kicking off the first pilot farms around March.

CCP5050

Layers Photos

Overview
Map
Reports
Reaction

CAA 5
mapbox

CTR:9

Attributes Forecasts Warnings (0)

Attributes [Click to lock](#)

Details

Area	4.75 ha	Width	66.08 m
Approximate Value			

Year Established
2026

Species
Indigenous

ETS Species
Indigenous

Report Category
Future Native Planting

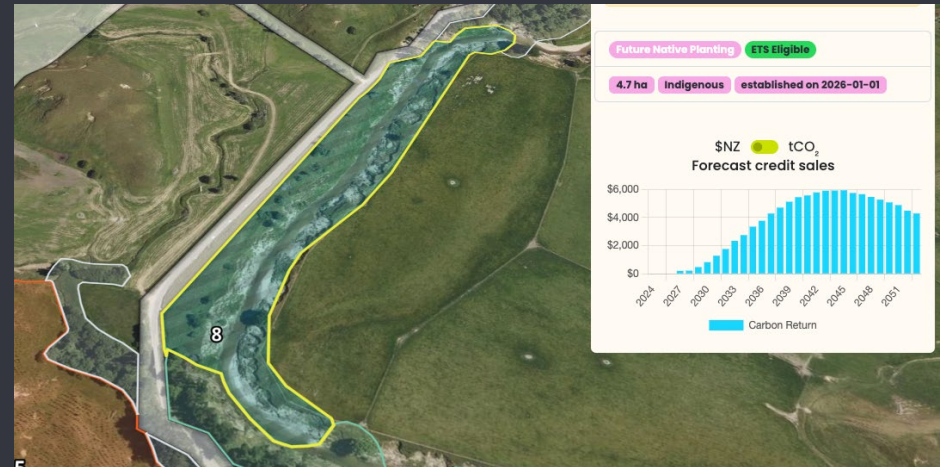
Planting Status
Draft Confirmed Planted

Registration Status
Draft

Credit Scheme
ETS (Permanent)

ETS CAA Number
Include

Content data sourced from the LINZ Data Service licensed for reuse under CC BY 4.0



An aerial photograph of a vast, mountainous landscape. A river winds through a deep valley, surrounded by steep, green hills. The terrain is rugged with visible ridges and gullies. The sky is clear and blue.

Questions?

Caveat: I'm not a carbon analyst but I'll do my best!